

# NEW GLASS EXPANSION D-TORCH\*

Reduce your ICP running costs  
with our revolutionary new  
demountable torch.

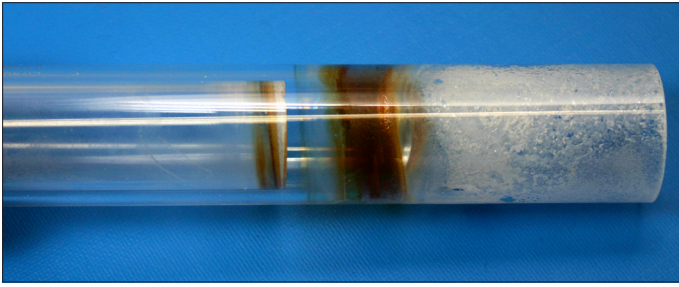


- Why replace the entire torch when just the outer tube wears? With the D-Torch, you need only replace the outer tube. And most operators will be saving money after only two replacements.
- Interchangeable quartz and ceramic outer tubes.
  - Quartz is ideal for most aqueous samples.
  - Ceramic lasts much longer for samples with high dissolved solids or for organics applications such as wear metals in engine oils.
  - Ceramic provides low background for Si determinations.
- Interchangeable injectors for aqueous, organics, high dissolved solids or HF applications.

The D-Torch is also much lower cost than other demountable torches. Please contact us for information on a D-Torch to suit your ICP model.

\* Patent Pending

A combination of high temperature and salt deposit causes a quartz torch to devitrify. Higher concentrations of salt in the samples lead to more rapid devitrification. The quartz torch in the photo was run for only 6 hours with samples containing 10% NaCl and is already badly degraded.



By contrast, the ceramic material does not devitrify and is not affected by salt deposits. The ceramic D-Torch in the photo was run for the same period and with the same samples as the quartz torch but shows no degradation at all.

### Comments by D-Torch users:

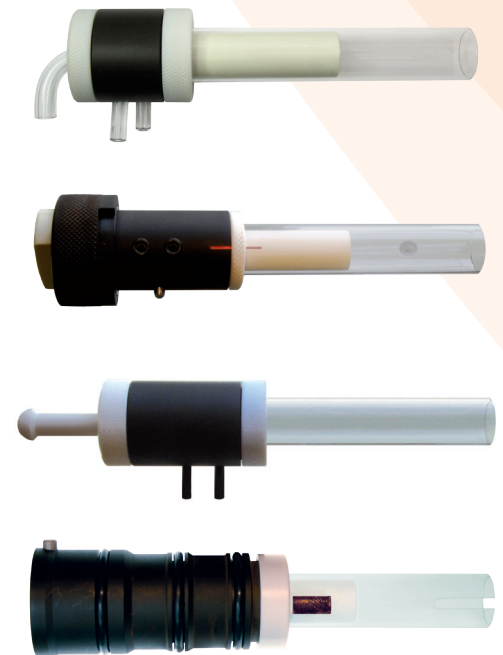
The D-Torch performs really well and we have had no problems with it. It performs just as well if not better than the single piece torches and obviously saves a lot of money in replacement parts.

The torch has been running like a Swiss watch ... The ceramic torch has shown no signs of deterioration, with 80 hrs/week running.

The Ceramic torch is quite excellent, mostly from a maintenance standpoint, it forms much less deposits on it and that which forms is usually very easy to clean ... I do think we'll continue buying ceramic torches mostly because they last much longer and are so much easier to keep clean.

I am quite pleased with the D-Torch. It's stable and rather easy to maintain and clean. It's also quite excellent for analyzing silica in a hydrofluoric digestion, I noticed my blanks for that were much lower and stable.

The D-Torch is performing very well. The ceramic outer has been in almost constant service 22 hours a day, 6 days a week since we purchased it and we have had no issues...We are due to purchase a replacement ICP and will certainly be purchasing another D-Torch to go along with it.



The D-Torch is available for a range of ICP models, including those from PerkinElmer, Spectro, Thermo and Varian. Please contact us for details.

### INTERNATIONAL

Glass Expansion • 6 Central Boulevard • Port Melbourne • Vic 3207, Australia  
Telephone: +61 3 9320 1111 • Toll Free (Aust): 1800 777 638  
Facsimile: +61 3 9320 1112 • Email: [enquiries@geicp.com](mailto:enquiries@geicp.com)

### AMERICAS

Glass Expansion • 4 Barlows Landing Road • Unit 2A • Pocasset, MA 02559, USA  
Telephone: 508 563 1800 • Toll Free (US): 800 208 0097  
Facsimile: 508 563 1802 • Email: [geusa@geicp.com](mailto:geusa@geicp.com)

[www.geicp.com](http://www.geicp.com)

